

SY-KLONE®

RESPA® FFX2

HIGH-EFFICIENCY RECIRCULATION & FILTRATION FOR CLEANER CAB AIR

The **RESPA®-FFX2** is Sy-Klone's advanced non-powered recirculation filtration system, engineered to work seamlessly alongside the RESPA-CF2 powered fresh-air system. Together, they form a complete Cab Air Quality System that meets the control requirements outlined in OSHA's silica regulations*—helping protect operators from harmful particulate exposure in the toughest environments.

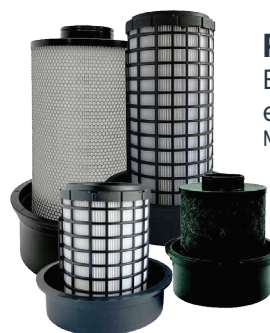
Compact yet powerful, the RESPA-FFX2 features a high-capacity radial filter that delivers up to ten times more filter media than standard panel filters, extending filter life while maintaining design airflow. Its versatile, low-cost housing is designed for flexible integration—whether mounted inside the cab or through the cab wall for convenient external filter servicing.

With its adaptable design and robust filtration options, the RESPA-FFX2 strengthens any cab air quality strategy—providing operators with cleaner, healthier air throughout their shift.

*Best Practice Recommendation of the International Society of Environmental Enclosure Engineers (ISEEE) for high-efficiency fresh and recirculated air filtration.



Enhance **Operator Safety** with superior in-cab air cleaning & protection with HEPA high-capacity recirculation filtration.



RadialSHIELD Air Filters

Enhanced protection and extended filter life
MERV 16, EPA, & HEPA